



# Censornet Platform

Freedom. Visibility. Protection. The Censornet Platform from Censornet fully integrates Email Security, Web Security, Cloud Access Security Broker (CASB) and Multi-Factor Authentication for both central configuration and management, as well as data visualization and reporting.

The Censornet Platform provides a single pane of glass view across multiple critical solutions, simplifying security, architected specifically and equally for both enterprises and MSPs.

The Censornet Platform enables organizations to move away from the more expensive approach of running separate solutions in silos and allows security teams to effectively and efficiently manage core security defenses, in a way that reflects how modern enterprises work today. The Censornet Platform allows users the freedom to access the applications and data they need - regardless of device or location, whilst providing visibility for IT and protection for all.

## CENSORNET PLATFORM

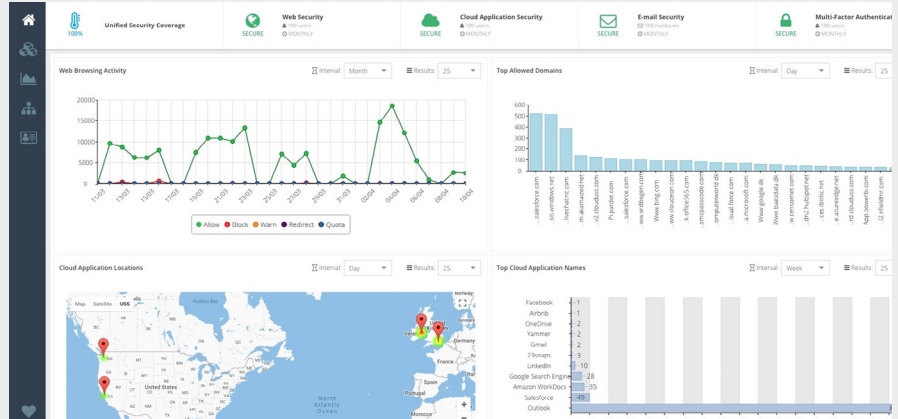
- Fully integrates multiple core security services for simplified management with a single underlying shared identity store
- 100% cloud-based with the ability to specify data residency by region (US, UK, Europe) per account
- Multi-tenant and multi-tiered - ideally suited to organizations of any size as well as MSPs
- White label option - change logos and interface colour for different partners, customers, or business units
- REST API for inclusion of any element of the Censornet Platform interface in virtually any other application
- Powerful Partner Tools include self-service account Provisioning, license management and billing reporting
- Assume admin for 'child accounts' with one click to perform actions on behalf of business units or customers
- Define unlimited administrator roles for flexible Segregation of the admin function
- Comprehensive audit trail of all administrator activity
- Home Dashboard with a range of charts and graphs for each service - for instant visibility of key metrics and trends
- Detailed reporting and analysis by an extensive list of drill-down criteria - including time, user, device, URL category, cloud application class, high risk actions, keywords, policy name, email volume, spam, malware and more
- Link reports to schedules to send via email as CSV or PDF attachment - also used for email alerts
- Auto-archiving of log data as well as scheduled reports
- Fully integrates with Microsoft® Active Directory (if required)
- Included with the purchase of any Censornet service - add additional services at any time

## DASHBOARDS & REPORTING

The Censornet Platform provides rich data visualization and reporting across all Censornet services and an extensive set of attributes and criteria.

Each administrator has their own Home Dashboard with charts and widgets specific to the services licensed. Multiple standard reports are included for each service within the Analytics section of the portal.

Detailed analysis and reporting is available by time, user, device (hostname and MAC address), URL category, web category, cloud application class, cloud app name, cloud app action, keyword (e.g. filename, comment, login details), policy name, risk level, email direction, delivery status (delivered, spam, virus), outcome (block or allow).



To optimize storage and reporting speeds logs are auto-archived based on individual service retention periods. As standard, these are 90 days for Email and Web Security and 1 year for Cloud App Security and MFA. Archives can be downloaded on-demand in CSV format.

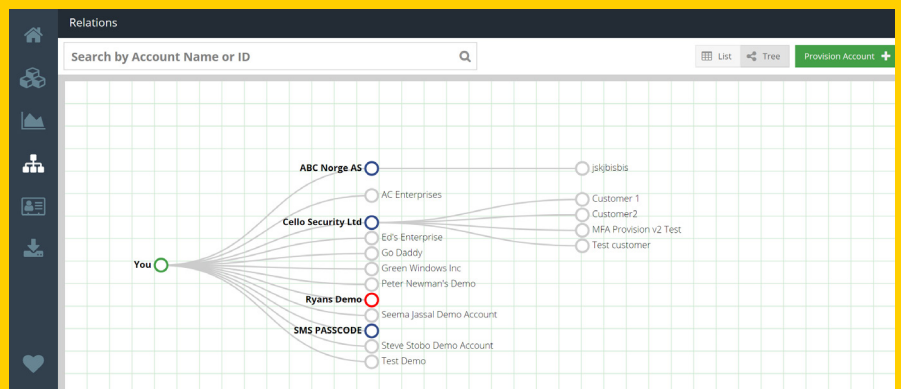
Whether audit data is required purely for visibility or for more formal attestation of compliance with internal policies or external standards, regulations and legislation, the Censornet Platform will provide the evidence needed.

## PARTNER TOOLS

Powerful Partner Tools within the Censornet Platform provides self-service tools for IT teams or MSPs to manage accounts. Features include new account provisioning, service and license management, ability to suspend or delete an account, search, as well as reporting on service usage and license status.

Where there are multiple tiers within the account hierarchy there is also the option to select whether Partner Tools are visible within the account – so that a regional HQ can manage different in-country businesses, or a reseller can manage their end users.

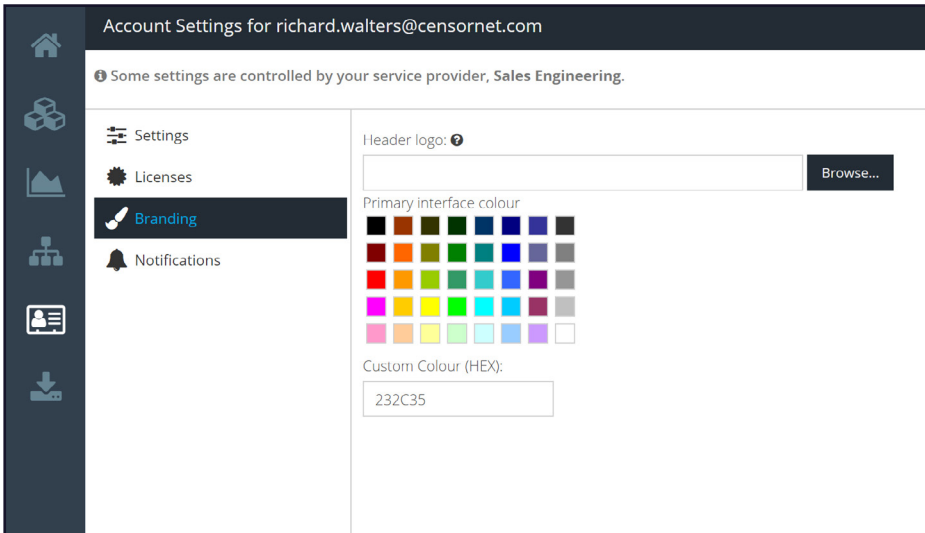
Account	Products	Provision	License	Products	Licenses	More
ABC Norge AS	[Icons]	[Icons]	[Icons]	[Icon]	[Icon]	[Icon]
AC Enterprises	[Icons]	[Icon]	[Icon]	[Icon]	[Icon]	[Icon]
Cello Security Ltd	[Icons]	[Icon]	[Icon]	[Icon]	[Icon]	[Icon]
Ed's Enterprise	[Icons]	[Icon]	[Icon]	[Icon]	[Icon]	[Icon]
Go Daddy	[Icons]	[Icon]	[Icon]	[Icon]	[Icon]	[Icon]
Green Windows Inc	[Icons]	[Icon]	[Icon]	[Icon]	[Icon]	[Icon]
Peter Newman's Demo	[Icons]	[Icon]	[Icon]	[Icon]	[Icon]	[Icon]
Ryans Demo	[Icons]	[Icon]	[Icon]	[Icon]	[Icon]	[Icon]
Seema Jassal Demo Account	[Icons]	[Icon]	[Icon]	[Icon]	[Icon]	[Icon]
SMS PASSCODE	[Icons]	[Icon]	[Icon]	[Icon]	[Icon]	[Icon]
Steve Stobo Demo Account	[Icons]	[Icon]	[Icon]	[Icon]	[Icon]	[Icon]
Test Demo	[Icons]	[Icon]	[Icon]	[Icon]	[Icon]	[Icon]



## MULTI-TENANT AND MULTI-TIERED

The Censornet Platform is 100% cloud-based and multi-tenant, delivered from data centers located in the US, UK and mainland Europe. To address data residency concerns, region is selected at the time of account provisioning. Customer data is segregated using separate database schemas and multiple layers of encryption - each tenant has a unique key ensuring their data is isolated and all access to the Censornet Platform is over HTTPS.

Branding allows MSPs to easily white label the Censornet Platform and - using an extensive API - embed any element available in the portal within their own applications.



The ability to create 'child accounts' within the portal is a powerful feature that makes the Censornet Platform ideal for large multi-national organizations or organizations with multiple brands, as well as perfectly suited to MSPs. Branding that include logo and interface colour can be applied to each account for different business units, partners or customers. Each account has a separate set of policies for flexibility in meeting local legislative and regulatory compliance requirements, taking into account differences in data protection and privacy laws.

## IDENTITY INTEGRATED

Within the Censornet Platform is a single identity store that is shared across Email Security, Web Security, Cloud Access Security Broker and Multi-Factor Authentication.

For organizations with Microsoft® Active Directory there are options for Local Sync or Cloud Sync. Local Sync uses a locally installed AD Connector Service (agent) which pushes objects to the Censornet Cloud. Cloud sync uses a LDAP or LDAPS connection to pull objects. Local Sync has the additional benefit of not requiring any firewall rule changes. Both methods require a read only service account in AD.

For those organizations that do not have AD, local usernames will still be captured where possible.

## EASE OF ADMINISTRATION

The Censornet Platform provides the flexibility to create unlimited admin roles based on over 100 access controls with the option to protect administrator accounts with two-factor authentication. The admin function can be split to match organizational requirements, segregating account and agent provisioning, from viewing web usage reports, from maintaining URL categories or managing the Cloud Application Catalog.

Enterprises can delegate admin activities to local or regional teams whilst MSPs can reflect responsibilities within SLAs or use role based access control to enable value added services.

Different email addresses can be entered to receive notifications relating to system, maintenance, unblock and log archive notifications.

Parent accounts can assume the administrator role for a child account to manage settings, policies and rules across all services, or troubleshoot issues, on behalf of business units or customers.

## CENSORNET PLATFORM

### Our platform

Our cloud security platform integrates email and web security, CASB (Cloud Access Security Broker) and adaptive MFA (Multi-Factor Authentication) activating the Autonomous Security Engine (ASE) to take you beyond alert driven security and into real-time automated attack prevention.



Secure your entire organization from known, unknown & emerging email security threats - including email fraud.



Protect users from web-borne malware, offensive or inappropriate content & improve productivity.



Discover, analyze, secure & manage user interaction with cloud applications - inline & using APIs.



Reduce impact of large scale data breaches by protecting user accounts with more than just passwords.

### Autonomous Security Engine

### ASE

Enable traditionally silo'd products to share and react to security events and state data whilst leveraging world class threat intelligence. Prevent attacks before they enter the kill chain.



ASE provides 24x7 security so you don't need to.



Full access to threat intelligence without the cost.



Integral part of the Censornet Platform.

**CENSORNET LTD**  
Network House, Basing View,  
Basingstoke, RG21 4HG, UK

Phone: +44 (0) 845 230 9590

**CENSORNET A/S**  
Park Allé 350D, 2605 Brøndby,  
Denmark

Phone: +45 70 22 55 33

**CENSORNET INC**  
700 Lavaca Street  
Suite 1400-PMB#100122  
Austin, TX 78701  
Phone: +1 (877) 302-3323